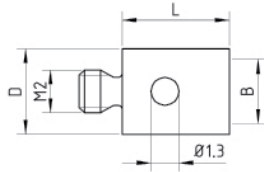


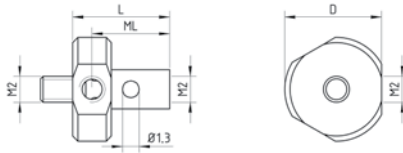
# STYLIM2

## Adaptor stainless steel



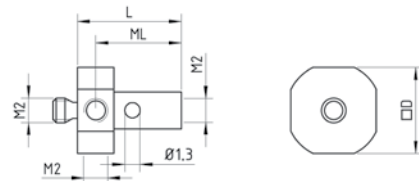
Part No.	S	L	ML	ML1	D	DS	B	Mass
K651061		5			4		M3	0.29
K651062		7			4		M3	0.42
K651063		10			4		M3	0.58
K651064		10			5		M4	0.79

## 4-way stylus holder stainless steel, rotatable



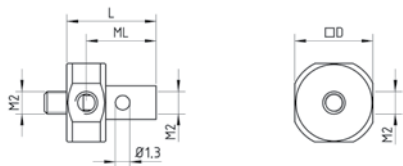
Part No.	S	L	ML	ML1	D	DS	DS1	Mass
K651056		7.5	6		7.5			1.07

## 5-way stylus holder stainless steel, fixed



Part No.	S	L	ML	ML1	D	DS	DS1	Mass
K651057		8.5	7		7			0.96

## 5-way stylus holder stainless steel, rotatable



Part No.	S	L	ML	ML1	D	DS	DS1	Mass
K651058		7.5	6		7			0.92

Unit: mm Mass: g